



SFR Hangzhou factory(SFR&SCH)
持正杭州工厂 (顺峰和速坡力尔)

- 摩托车链 Motorcycle chain
- 汽车链 Automotive Timing chain



SFR Huangshan factory(TVH)
持正黄山工厂 (黄山中链)

- 摩托车链 Motorcycle chain



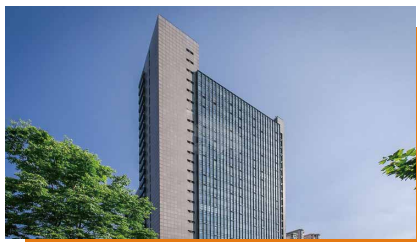
SFR Huzhou factory(Elephant)
持正湖州工厂 (象牌)

- 传动链 Driving chain
- 农机链 Agricultural chain
- 曳引链 Hoisting chain



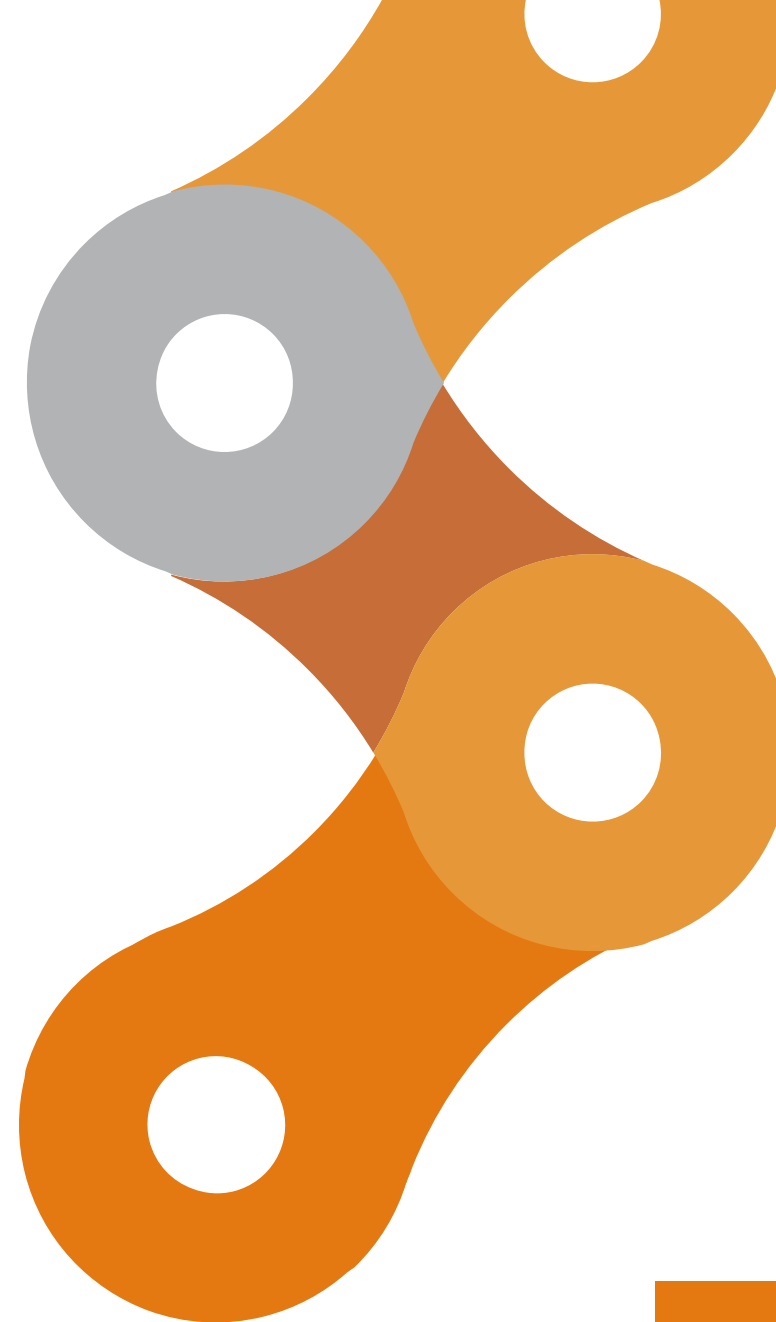
SFR Shaoxing factory(SST)
持正绍兴工厂 (绍兴持正)

- 输送链 Conveyor chain
- 非标链 Special chain



International Sales Center.
Hangzhou Transailing Industrial Co.,Ltd
销售中心.杭州中汇传动实业有限公司

- Tel.+86-571-85461548
- Fax.+86-571-85461550
- Email sales@sfrchain.com



杭州持正科技股份有限公司
SFR TECHNOLOGY CO., LTD.

持正股份自1991年成立以来，一直致力于摩托车链及工业链的制造与研发，始终专注于生产高品质产品与技术创新，保持行业领先地位。

持正股份于2016年收购象牌（EP），2018年收购杭州中汇传动（TSI）后，已整合成中国领先的链条制造商，产品线涵盖摩链和工业链的全系列产品和相关应用。

公司生产的链条有2000多个系列，8000多个产品，出口世界80多个国家，广泛应用于农业机械、摩托车、冶金、木材加工、食品饮料等多个领域。

持正股份拥有4个全资工厂和1个合资企业，通过ISO9001和IATF16949质量管理体系认证。公司致力于创新和研发，与国内多所知名高校、科研院所建立了稳定的合作关系，并在集团内部建立了智能链传动研发中心，拥有70多项专利。这使得公司产品能够在动力传动和物料输送等应用领域具有强有力的竞争力。

我们始终坚持诚信、高效、创新的企业精神：“努力为客户提供最优质的产品和服务”。

SFR Chain Group has been excelling at manufacturing and innovating motorcycle and industrial chain since 1991, always focusing on high quality and innovation to stay in the pole positions of the industry.

With the recent acquisition of manufacturers Elephant Chain (EP) in 2016, and Hangzhou Transailing Industrial (TSI) in 2018, SFR Chain Group has consolidated itself as one of the top chain manufacturers in China, increasing its industry scope to industrial chain, and with a wide product line covering all chain sizes and applications.

Only in chain, SFR offers over 2000 series, and more than 5000 products, which are exported to over 80 countries all over the World, and are widely used in variety of fields, such as agricultural machines, motorcycles, metallurgy, wood processing, or food and beverage processing, among others.

SFR operates four fully owned factories and one joint venture, certified by ISO9001 and IATF 16949 Quality Management System. Our commitment to R&D led SFR to establish stable cooperation with several well-known universities and research institutes in China, as well as setting up an Intelligent Chain Drive Research Center within the group, altogether resulting in its more than 70 patents. This allows us to offer the widest range of power transmission and conveyor chain at the most competitive prices.

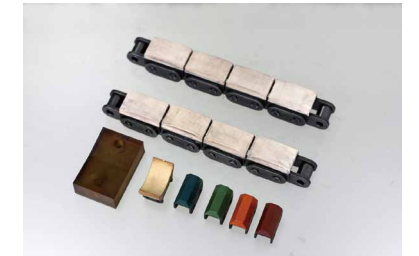
We at SFR Chain always adhere to the group's spirit of integrity, efficiency and innovation: "We strive to offer the best products and service to our customers".



棕榈油链
Palm Oil conveyor chains



尖齿链
Sharp top chains



橡胶链
Rubber top chains



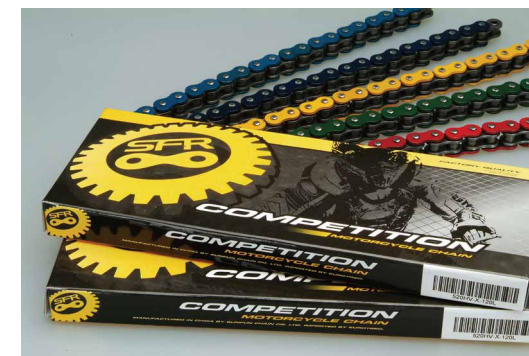
S型农机链带附件
S type agricultural chains with attachment



CA型农机链带附件
CA type agricultural chains with attachment



窗机链
Window pushing chains



摩托车链
Motorcycle chains



用于出口和储存的耐用包装
Resistant packing for export and storage

Short Pitch Precision Roller Chains (A Series)



双节距标准链
Double pitch standard roller chains



双节距标准链带附板
Double pitch standard roller chains with attachment plates



双节距标准链带加长销轴
Double pitch standard roller chains with extended pins



双节距标准链带特殊附件
Double pitch standard roller chains with special attachments



空心销轴链
Hollow pin chains



米制输送链
M/FV series conveyor chains



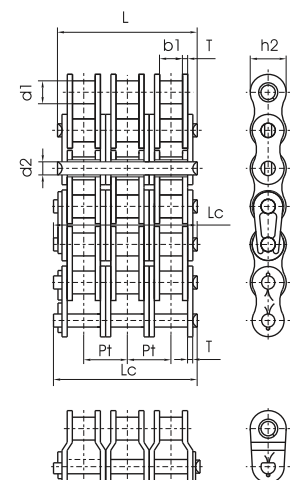
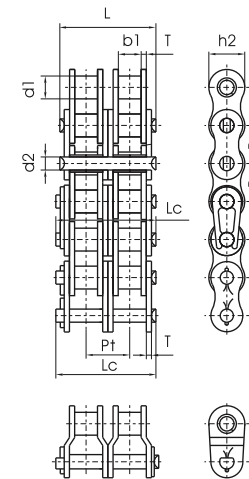
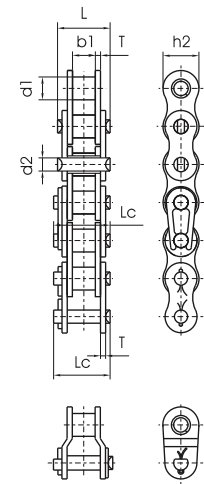
米制输送链带附件
M/FV series conveyor chains with attachments



木材输送链
Lumber conveyor chains



刮板链
Scraper conveyor chains



单排滚子链/套筒链 - Simplex roller chains & bushing chains

链号 Chain No.	节距 Pitch	滚子直径 Roller diameter	内节内宽 Width between inner plates		销轴直径 Pin diameter	销轴长度 Pin length		内片宽度 Inner plate depth	链板厚度 Plate thickness	极限拉伸载荷 Ultimate tensile strength	平均拉伸载荷 Average tensile strength	米重 Weight per meter
			d1 max	b1 min		d2 max	L max					
DIN/ISO	ANSI	P	d1 max	b1 min	d2 max	L max	Lc max	h2 max	T max	Q min	Q0	q
		mm	mm	mm	mm	mm	mm	mm	mm	kN/LB	kN	kg/m
*03C	*15	4.7625	2.48	2.38	1.62	6.10	6.90	4.30	0.60	1.80/409	2.0	0.08
*04C-1	*25	6.350	3.30	3.18	2.31	7.90	8.40	6.00	0.80	3.50/795	4.6	0.15
*06C-1	*35	9.525	5.08	4.77	3.58	12.40	13.17	9.00	1.30	7.90/1795	10.8	0.33
085-1	41	12.700	7.77	6.25	3.58	13.75	15.00	9.91	1.30	6.67/1516	12.6	0.41
08A-1	40	12.700	7.95	7.85	3.96	16.60	17.80	12.00	1.50	14.10/3205	17.5	0.62
10A-1	50	15.875	10.16	9.40	5.08	20.70	22.20	15.09	2.03	22.20/5045	29.4	1.02
12A-1	60	19.050	11.91	12.57	5.94	25.90	27.70	18.00	2.42	31.80/7227	41.5	1.50
16A-1	80	25.400	15.88	15.75	7.92	32.70	35.00	24.00	3.25	56.70/12886	69.4	2.60
20A-1	100	31.750	19.05	18.90	9.53	40.40	44.70	30.00	4.00	88.50/20114	109.2	3.91
24A-1	120	38.100	22.23	25.22	11.10	50.30	54.30	35.70	4.80	127.00/28864	156.3	5.62
28A-1	140	44.450	25.40	25.22	12.70	54.40	59.00	41.00	5.60	172.40/39182	212.0	7.50
32A-1	160	50.800	28.58	31.55	14.27	64.80	69.60	47.80	6.40	226.80/51545	278.9	10.10
36A-1	180	57.150	35.71	35.48	17.46	72.80	78.60	53.60	7.20	280.20/63682	341.8	13.45
40A-1	200	63.500	39.68	37.85	19.85	80.30	87.20	60.00	8.00	353.80/80409	431.6	16.15
48A-1	240	76.200	47.63	47.35	23.81	95.50	103.00	72.39	9.50	510.30/115977	622.5	23.20

双排滚子链/套筒链 - Duplex roller chains & bushing chains

链号 Chain No.	节距 Pitch	滚子直径 Roller diameter	内节内宽 Width between inner plates		销轴直径 Pin diameter	销轴长度 Pin length		内片宽度 Inner plate depth	链板厚度 Plate thickness	排距 Transverse pitch	极限拉伸载荷 Ultimate tensile strength	平均拉伸载荷 Average tensile strength	米重 Weight per meter
			d1 max	b1 min		d2 max	L max						
DIN/ISO	ANSI	P	d1 max	b1 min	d2 max	L max	Lc max	h2 max	T max	Pt	Q min	Q0	q
		mm	mm	mm	mm	mm	mm	mm	mm	mm	kN/LB	kN	kg/m
*04C-2	*25-2	6.350	3.30	3.18	2.31	14.5	15.0	6.00	0.80	6.40	7.00/1591	8.6	0.28
*06C-2	*35-2	9.525	5.08	4.77	3.58	22.5	23.3	9.00	1.30	10.13	15.80/3591	19.7	0.63
085-2	41-2	12.700	7.77	6.25	3.58	25.7	26.9	9.91	1.30	11.95	13.34/3032	16.9	0.81
08A-2	40-2	12.700	7.95	7.85	3.96	31.0	32.2	12.00	1.50	14.38	28.20/6409	35.9	1.12
10A-2	50-2	15.875	10.16	9.40	5.08	38.9	40.4	15.09	2.03	18.11	44.40/10091	58.1	2.00
12A-2	60-2	19.050	11.91	12.57	5.94	48.8	50.5	18.00	2.42	22.78	63.60/14455	82.1	2.92
16A-2	80-2	25.400	15.88	15.75	7.92	62.7	64.3	24.00	3.25	29.29	113.40/25773	141.8	5.15
20A-2	100-2	31.750	19.05	18.90	9.53	76.4	80.5	30.00	4.00	35.76	177.00/40227	219.4	7.80
24A-2	120-2	38.100	22.23	25.22	11.10	95.8	99.7	35.70	4.80	45.44	254.00/57727	314.9	11.70
28A-2	140-2	44.450	25.40	25.22	12.70	103.3	107.9	41.00	5.60	48.87	344.80/78364	427.5	15.14
32A-2	160-2	50.800	28.58	31.55	14.27	123.3	128.1	47.80	6.40	58.55	453.60/103091	562.4	20.14
36A-2	180-2	57.150	35.71	35.48	17.46	138.6	144.4	53.60	7.20	65.84	560.50/127386	695.0	29.22
40A-2	200-2	63.500	39.68	37.85	19.85	158.8	164.6	60.00	8.00	71.55	707.60/160818	877.4	32.24
48A-2	240-2	76.200	47.63	47.35	23.81	183.4	190.8	72.39	9.50	87.83	1020.60/213955	1255.3	45.23

三排滚子链/套筒链 - Triplex roller chains & bushing chains

链号 Chain No.	节距 Pitch	滚子直径 Roller diameter	内节内宽 Width between inner plates		销轴直径 Pin diameter	销轴长度 Pin length		内片宽度 Inner plate depth	链板厚度 Plate thickness	排距 Transverse pitch	极限拉伸载荷 Ultimate tensile strength	平均拉伸载荷 Average tensile strength	米重 Weight per meter
			d1 max	b1 min		d2 max	L max						
DIN/ISO	ANSI	P	d1 max	b1 min	d2 max	L max	Lc max	h2 max	T max	Pt	Q min	Q0	q
		mm	mm	mm	mm	mm	mm	mm	mm	mm	kN/LB	kN	kg/m
*04C-3	*25-3	6.350	3.30	3.18	2.31	21.0	21.5	6.00	0.80	6.40	10.5/2386	12.6	0.44
*06C-3	*35-3	9.525	5.08	4.77	3.58	32.7	33.5	9.00	1.30	10.13	23.7/5386	28.6	1.05
08A-3	40-3	12.700	7.95	7.85	3.96	45.4	46.6	12.00	1.50	14.38	42.3/9614	50.0	1.90
10A-3	50-3	15.875	10.16	9.40	5.08	57.0	58.5	15.09	2.03	18.11	66.6/15136	77.8	3.09
12A-3	60-3	19.050	11.91	12.57	5.94	71.5	73.3	18.00	2.42	22.78	95.4/21682	111.1	4.54
16A-3	80-3	25.400	15.88	15.75	7.92	91.7	93.6	24.00	3.25	29.29	170.1/38659	198.4	7.89
20A-3	100-3	31.750	19.05	18.90	9.53	112.2	116.3	30.00	4.00	35.76	265.5/60341	309.6	11.77
24A-3	120-3	38.100	22.23	25.22	11.10	141.4	145.2	35.70	4.80	45.44	381.0/86591	437.2	17.53
28A-3	140-3	44.450	25.40	25.22	12.70	152.2	156.8	41.00	5.60	48.87	517.2/117545	593.3	22.20
32A-3	160-3	50.800	28.58	31.55	14.27	181.8	186.6	47.80	6.40	58.55	680.4/154636	780.6	30.02
36A-3	180-3	57.150	35.71	35.48	17.46	204.4	210.2	53.60	7.20	65.84	840.7/191068	983.6	38.22
40A-3	200-3	63.500	39.68	37.85	19.85	223.5	230.4	60.00	8.00	71.55	1061.4/241227	1217.8	49.03
48A-3	240-3	76.200	47.63	47.35	23.81	271.3	278.6	72.39	9.50	87.83	1530.9/347932	1756.5	71.60

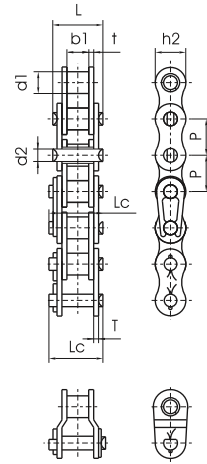
*套筒链: 表格中的 d1 指套筒外径

Bushing chain: d1 in the table indicates the external diameter of the bushing

■ B系列短节距精密滚子链 - Short Pitch Precision Roller Chains (B Series)

单排滚子链 - Simplex roller chains

链号 DIN/ISO Chain No.	节距 Pitch	滚子直径 Roller diameter	内节内宽 Width between inner plates	销轴直径 Pin diameter	销轴长度 Pin length		内片宽度 Inner plate depth	链板厚度 Plate thickness	极限拉伸载荷 Ultimate tensile strength	平均拉伸载荷 Average tensile strength	米重 Weight per meter
					L max	Lc max					
					P	d1 max					
04B-1	6.000	4.00	2.80	1.85	6.80	7.8	5.00	0.60	3.0/682	3.2	0.11
05B-1	8.000	5.00	3.00	2.31	8.20	8.9	7.10	0.80	5.0/1136	5.9	0.20
*06B-1	9.525	6.35	5.72	3.28	13.15	14.1	8.20	1.30	9.0/2045	10.4	0.41
08B-1	12.700	8.51	7.75	4.45	16.70	18.2	11.80	1.60	18.0/4091	19.4	0.69
10B-1	15.875	10.16	9.65	5.08	19.50	20.9	14.70	1.70	22.4/5091	27.5	0.93
12B-1	19.050	12.07	11.68	5.72	22.50	24.2	16.00	1.85	29.0/6591	32.2	1.15
16B-1	25.400	15.88	17.02	8.28	36.10	37.4	21.00	4.15/3.1	60.0/13636	72.8	2.71
20B-1	31.750	19.05	19.56	10.19	41.30	45.0	26.40	4.5/3.5	95.0/21591	106.7	3.70
24B-1	38.100	25.40	25.40	14.63	53.40	57.8	33.20	6.0/4.8	160.0/36364	178.0	7.10
28B-1	44.450	27.94	30.99	15.90	65.10	69.5	36.70	7.5/6.0	200.0/45455	222.0	8.50
32B-1	50.800	29.21	30.99	17.81	66.00	71.0	42.00	7.0/6.0	250.0/56818	277.5	10.25
40B-1	63.500	39.37	38.10	22.89	82.20	89.2	52.96	8.5/8.0	355.0/80682	394.0	16.35
48B-1	76.200	48.26	45.72	29.24	99.10	107.0	63.80	12.0/10.0	560.0/127272	621.6	25.00



短节距标准链

Short pitch standard roller chains



短节距标准链带附板

Short pitch standard roller chains with attachment plates

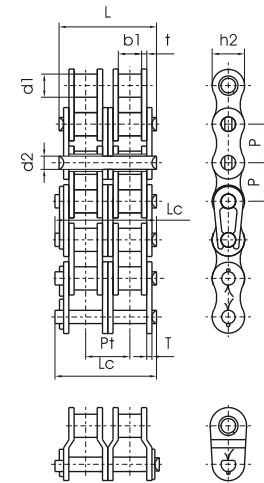


短节距标准链带加长销轴

Short pitch standard roller chains with extended pins

双排滚子链 - Duplex roller chains

链号 DIN/ISO Chain No.	节距 Pitch	滚子直径 Roller diameter	内节内宽 Width between inner plates	销轴直径 Pin diameter	销轴长度 Pin length		内片宽度 Inner plate depth	链板厚度 Plate thickness	排距 Transverse pitch	极限拉伸载荷 Ultimate tensile strength	平均拉伸载荷 Average tensile strength	米重 Weight per meter
					L max	Lc max						
					P	d1 max						
05B-2	8.000	5.00	3.00	2.31	13.9	14.5	7.10	0.80	5.64	7.8/1773	10.2	0.33
*06B-2	9.525	6.35	5.72	3.28	23.4	24.4	8.20	1.30	10.24	16.9/3841	18.7	0.77
08B-2	12.700	8.51	7.75	4.45	31.2	32.2	11.80	1.60	13.92	32.0/7273	38.7	1.34
10B-2	15.875	10.16	9.65	5.08	36.1	37.5	14.70	1.70	16.59	44.5/10114	56.2	1.84
12B-2	19.050	12.07	11.68	5.72	42.0	43.6	16.00	1.85	19.46	57.8/13136	66.1	2.31
16B-2	25.400	15.88	17.02	8.28	68.0	69.3	21.00	4.15/3.1	31.88	106.0/24091	133.0	5.42
20B-2	31.750	19.05	19.56	10.19	77.8	81.5	26.40	4.5/3.5	36.45	170.0/38636	211.2	7.20
24B-2	38.100	25.40	25.40	14.63	101.7	106.2	33.20	6.0/4.8	48.36	280.0/63636	319.2	13.40
28B-2	44.450	27.94	30.99	15.90	124.6	129.1	36.70	7.5/6.0	59.56	360.0/81818	406.8	16.60
32B-2	50.800	29.21	30.99	17.81	124.6	129.6	42.00	7.0/6.0	58.55	450.0/102273	508.5	21.00
40B-2	63.500	39.37	38.10	22.89	154.5	161.5	52.96	8.5/8.0	72.29	630.0/143182	711.9	32.00
48B-2	76.200	48.26	45.72	29.24	190.4	198.2	63.80	12.0/10.0	91.21	1000.0/227272	1130.0	50.00



短节距标准链带特殊附件

Short pitch standard roller chains with special attachments



直板型短节距标准链

Short pitch standard roller chains with straight side plates

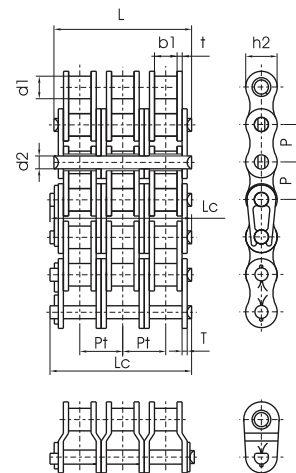


节节开口销型短节距标准链

Cottered type short pitch standard roller chains

三排滚子链 - Triplex roller chains

链号 DIN/ISO Chain No.	节距 Pitch	滚子直径 Roller diameter	内节内宽 Width between inner plates	销轴直径 Pin diameter	销轴长度 Pin length		内片宽度 Inner plate depth	链板厚度 Plate thickness	排距 Transverse pitch	极限拉伸载荷 Ultimate tensile strength	平均拉伸载荷 Average tensile strength	米重 Weight per meter
					L max	Lc max						
					P	d1 max						
05B-3	8.000	5.00	3.00	2.31	19.5	20.2	7.10	0.80	5.64	11.1/2523	13.8	0.48
*06B-3	9.525	6.35	5.72	3.28	33.5	34.6	8.20	1.30	10.24	24.9/5659	30.1	1.16
08B-3	12.700	8.51	7.75	4.45	45.1	46.1	11.80	1.60	13.92	47.5/10795	57.8	2.03
10B-3	15.875	10.16	9.65	5.08	52.7	54.1	14.70	1.70	16.59	66.7/15159	84.5	2.77
12B-3	19.050	12.07	11.68	5.72	61.5	63.1	16.00	1.85	19.46	86.7/19705	101.8	3.46
16B-3	25.400	15.88	17.02	8.28	99.8	101.2	21.00	4.15/3.1	31.88	160.0/36364	203.7	8.13
20B-3	31.750	19.05	19.56	10.19	114.2	117.9	26.40	4.5/3.5	36.45	250.0/56818	290.0	10.82
24B-3	38.100	25.40	25.40	14.63	150.1	154.6	33.20	6.0/4.8	48.36	425.0/96591	493.0	20.10
28B-3	44.450	27.94	30.99	15.90	184.2	188.7	36.70	7.5/6.0	59.56	530.0/120454	609.5	24.92
32B-3	50.800	29.21	30.99	17.81	183.2	188.2	42.00	7.0/6.0	58.55	670.0/152273	770.5	31.56
40B-3	63.500	39.37	38.10	22.89	226.8	233.8	52.96	8.5/8.0	72.29	950.0/215909	1092.5	48.10
48B-3	76.200	48.26	45.72	29.24	281.6	289.4	63.80	12.0/10.0	91.21	1500.0/340909	1710.0	75.00



板式链
Leaf chains



联轴器链
Coupling chains



链条联轴器
Chain couplings

* Straight side plates